

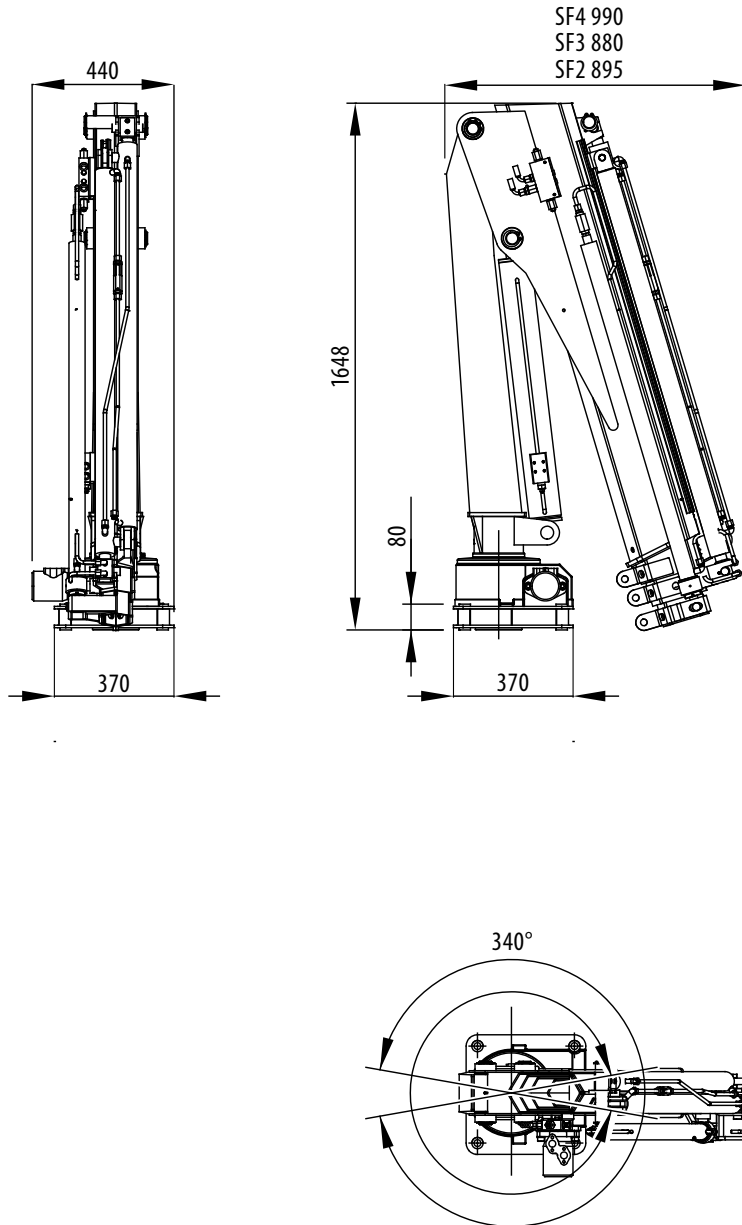
ATLAS

Krane / Cranes / Grues

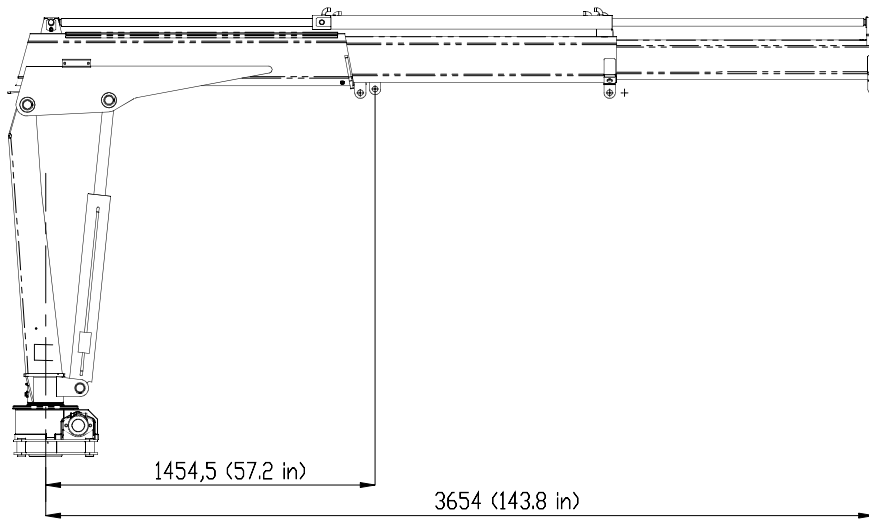


TC33C

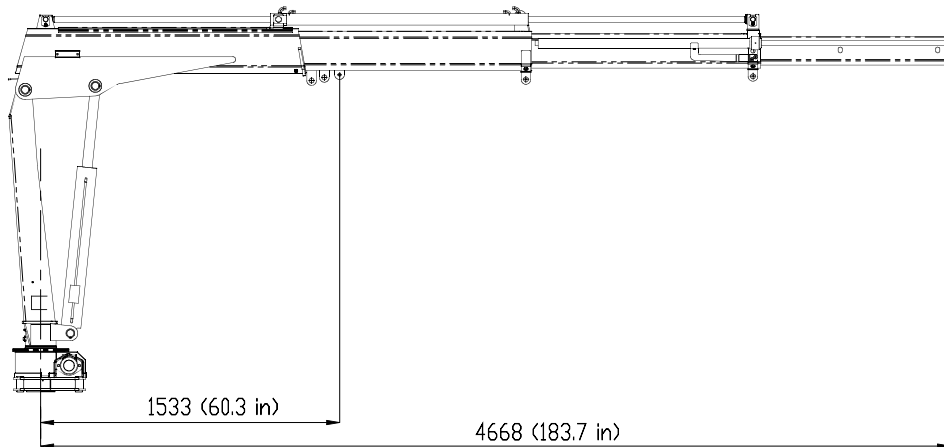
	SF2	SF3	SF4
MAX. HUBMOMENT LIFTING MOMENT COUPLE DE LEVAGE	31.7 kNm 23380 ft.lbs	31.6 kNm 23307 ft.lbs	27,5 kNm 20283 ft.lbs
MAX. HUBKRAFT MAX. LIFTING CAPACITY PUISSANCE DE LEVAGE	2230 kg 4915 lbs	2110 kg 4650 lbs	1750 kg 3860 lbs
MAX. HYDRAULISCHE REICHWEITE MAX. HYDRAULIC OUTREACH PORTÉE HYDRAULIQUE MAXIMALE	3.65 m 11.97 ft	4.67 m 15.32 ft	5.67 m 18.60 ft
SCHWENKBEREICH SLEWING ANGLE ANGLE DE ROTATION	340°	340°	340°
SCHWENKMOMENT SLEWING TORQUE COUPLE DE ROTATION	3.2 kNm (0.33 m) 2390 ft.lbs	3.2 kNm (0.33 m) 2390 ft.lbs	3.2 kNm (0.33 m) 2390 ft.lbs
MAX. BETRIEBSDRUCK OPERATING PRESSURE PRESSION D'UTILISATION	19.0 Mpa (190 bar) 2755 psi	19.0 Mpa (190 bar) 2755 psi	19.0 Mpa (190 bar) 2755 psi
EMPFOHLENE FÖRDERMENGE DER PUMPE RECOMMENDED PUMP CAPACITY DÉBIT DE POMPE RECOMMANDÉ	8 l/min 1.8 imp. gal/min 2.1 US gal/min	8 l/min 1.8 imp. gal/min 2.1 US gal/min	8 l/min 1.8 imp. gal/min 2.1 US gal/min



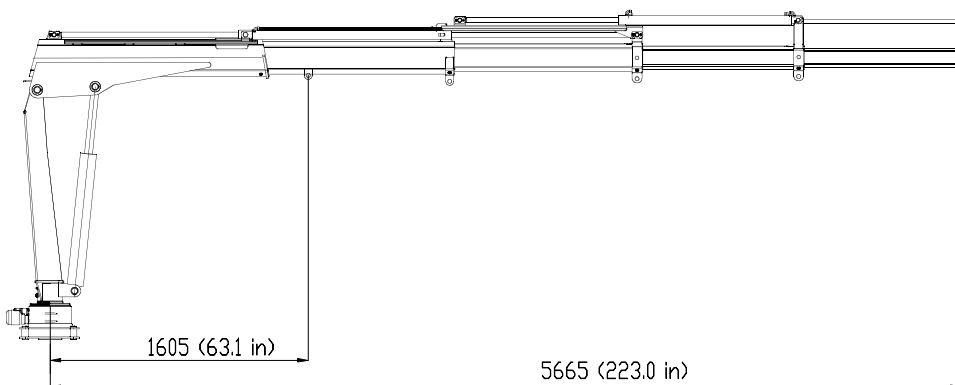
TC33C - SF2



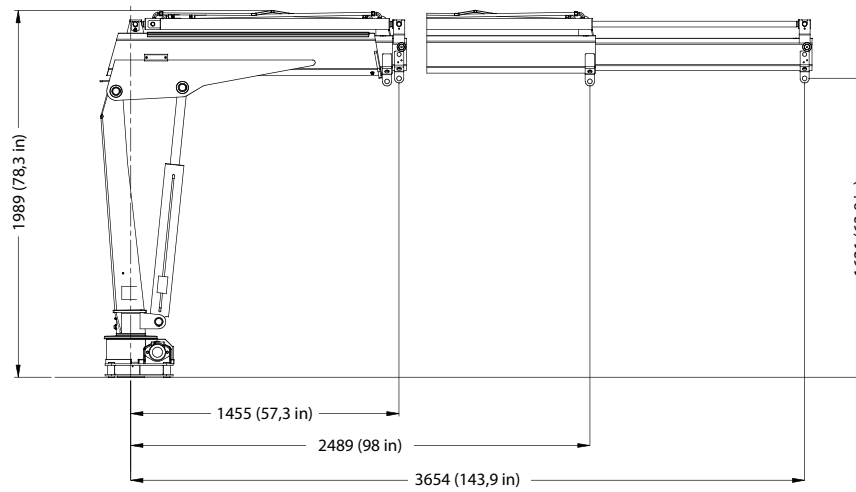
TC33C - SF3



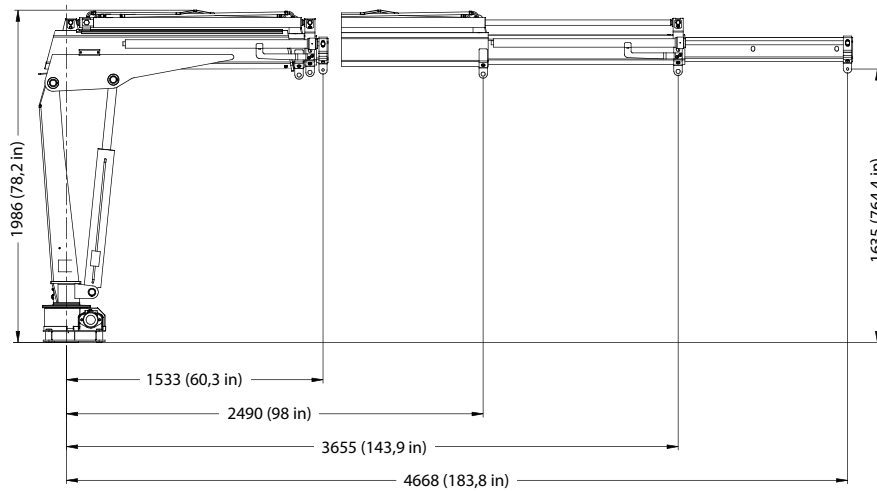
TC33C - SF4



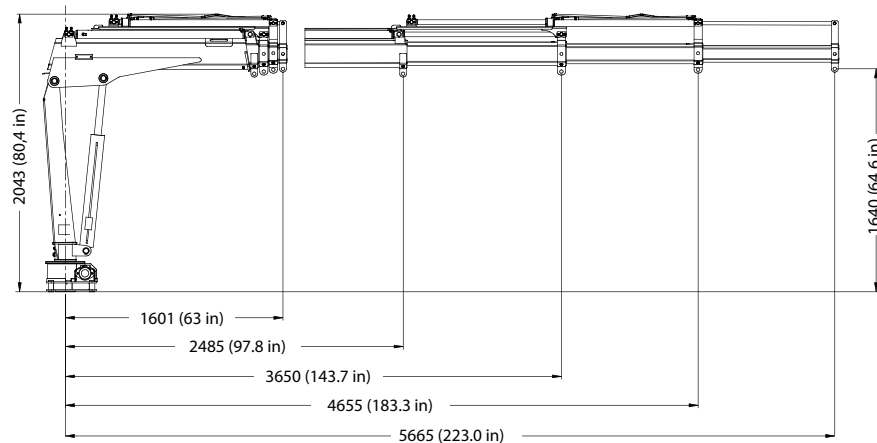
TC33C - SF2



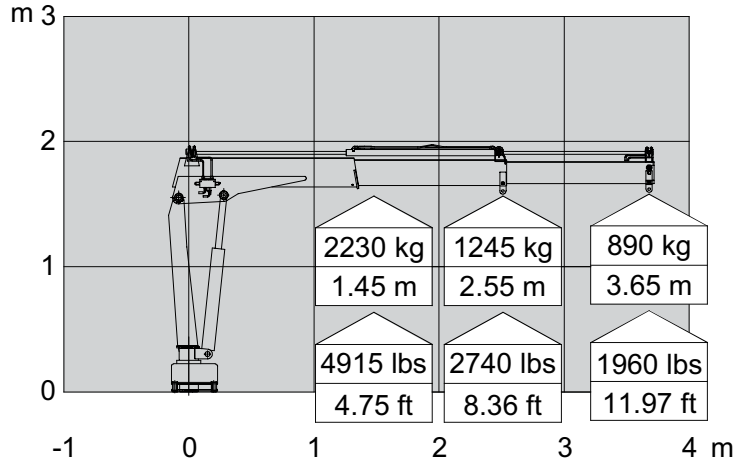
TC33C - SF3



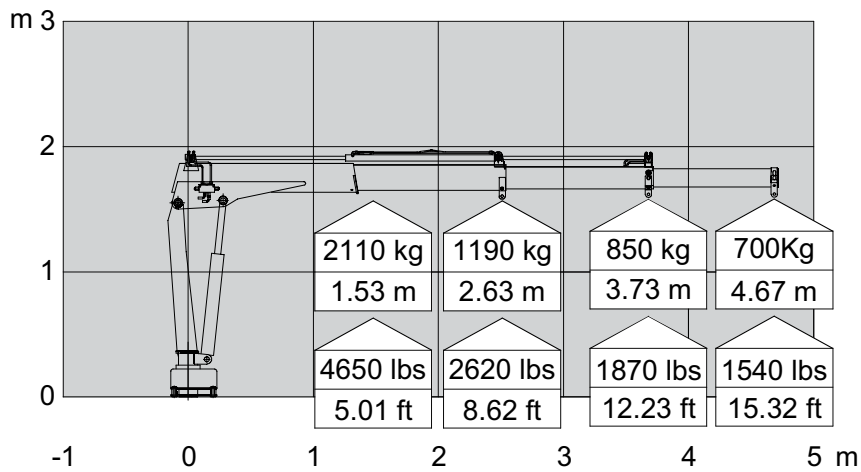
TC33C - SF4



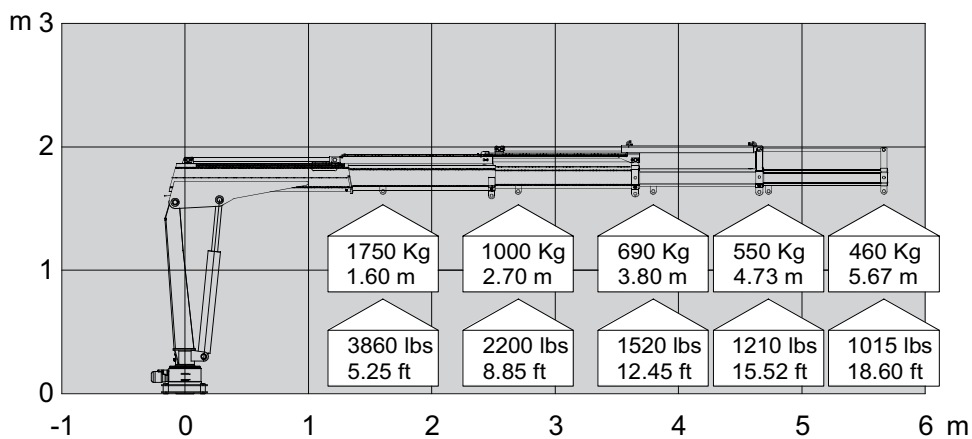
TC33C - SF2

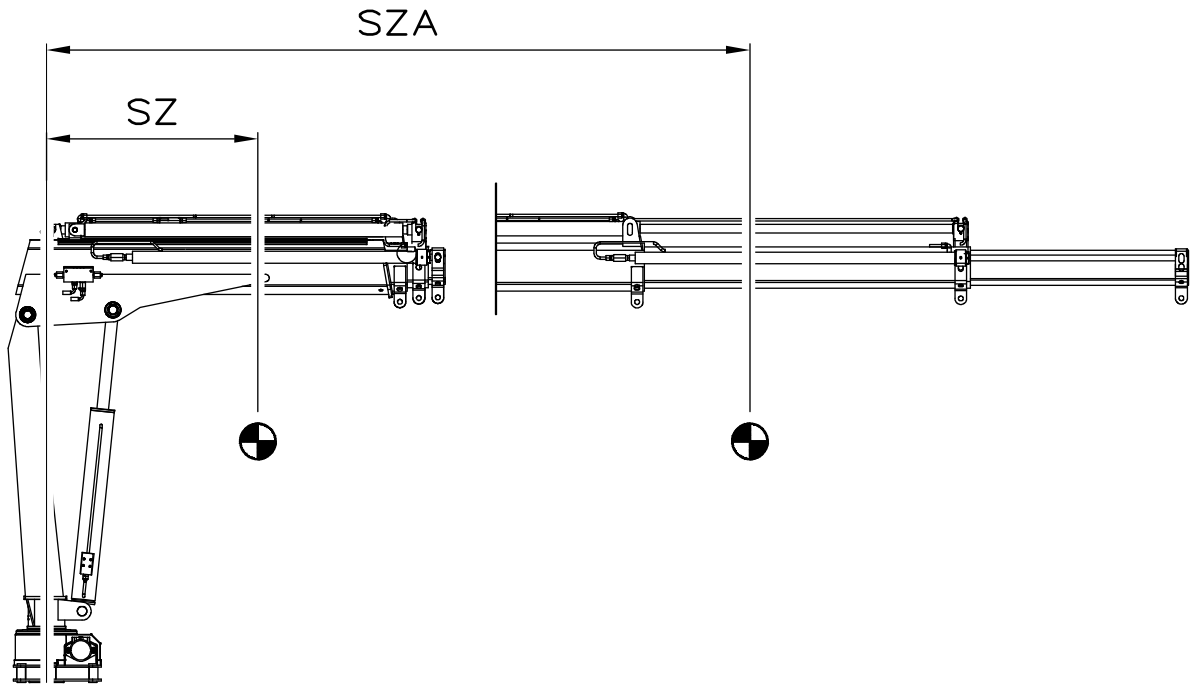


TC33C - SF3



TC33C - SF4



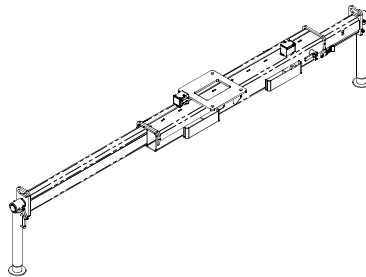
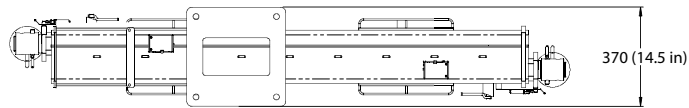
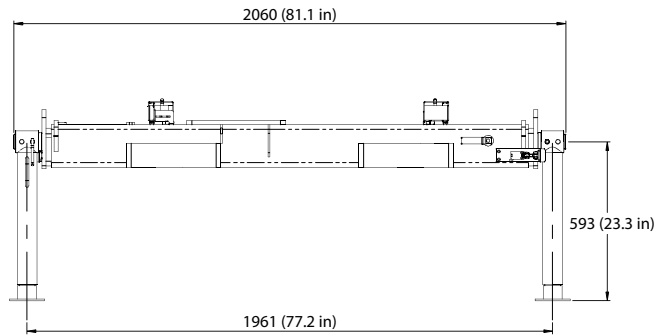
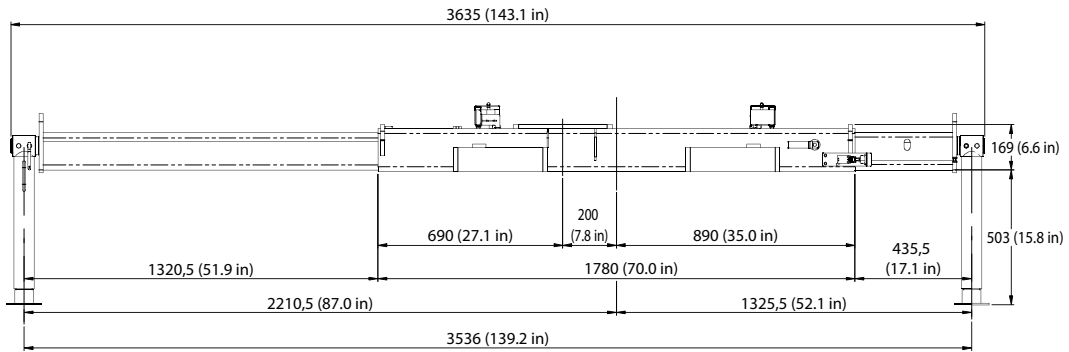


SZ = VOLL EINGEFAHREN
FULLY RETRACTED
COMPLETEMENT RENTRES

SZA = VOLL AUSGEFAHREN
FULLY EXTENDED
COMPLETEMENT SORTIES

	SF2	SF3	SF4	HYDRAULISCHE AUSSCHÜBE HYDRAULIC EXTENSIONS EXTENSIONS HYDRAULIQUES
SZ	344 mm 13.5 in	409 mm 16.1 in	414 mm 16.3 in	
SZA	774 mm 30.5 in	1096 mm 43.2 in	1226 mm 48.7 in	

	Gewicht	Weight	Poids
SF2		320 kg/706 lbs	
SF3		350 kg/770 lbs	
SF4		418 kg/920 lbs	



OPTIONAL

BASISVERSION "CE"
BASE "CE" VERSION
VERSION DE BASE "CE"



Konstruktionsänderungen vorbehalten, Angaben unverbindlich, Geräte sind conform mit neuen europäischen Sicherheitsrichtlinien.

Design modifications reserved, specifications non-binding, units are in conformance with new European safety guidelines.

Sous réserve de modifications de la construction, indications sans engagement, les engins sont conformes aux nouvelles directives européennes en matière de sécurité.