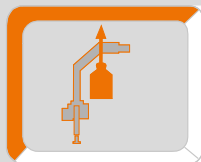


# ATLAS

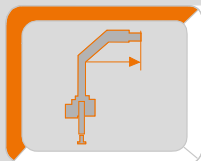
Krane / Cranes / Grues / Grúa



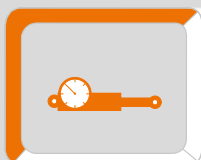
Ladekran AK 96.3



max : 4700 Kg



max : 16,30 m



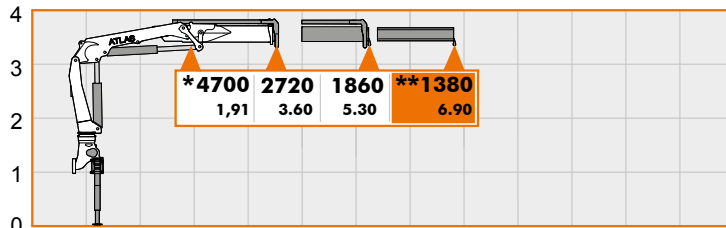
max : 300 bar

**AVAILABLE & COST EFFECTIVE**

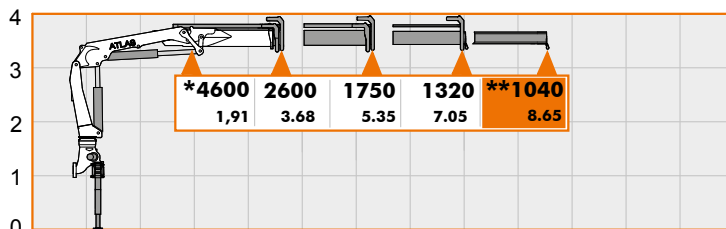
# LASTDIAGRAMM

Load Diagram-Courbes de charges-Curvas de cargas - Diagramma di portata

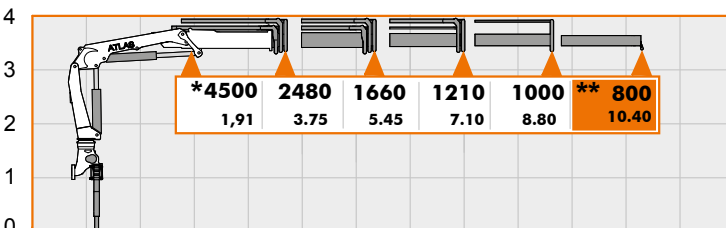
## AK 96.3



A1



A2

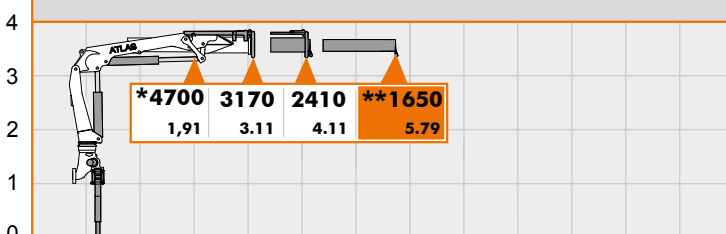


A3

Hubarmstellung 10°/ boom position 10°/ Faites tonner la position à 10°/ Lance posición 10°

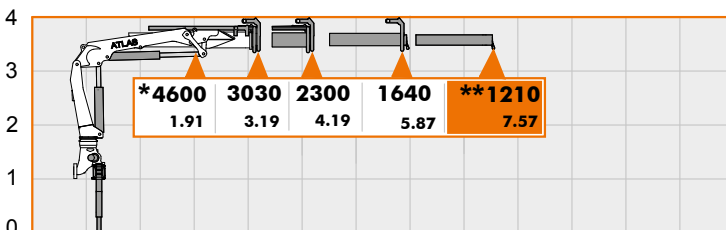
**\*\*** - Optional { manuelle Verlängerung  
manuell extension  
l'extension mécanique  
extensiones manuales

**\*** - additional load hook point at jib  
supplémentaires point crochet à flèche  
carga adicional punto de gancho en la horca

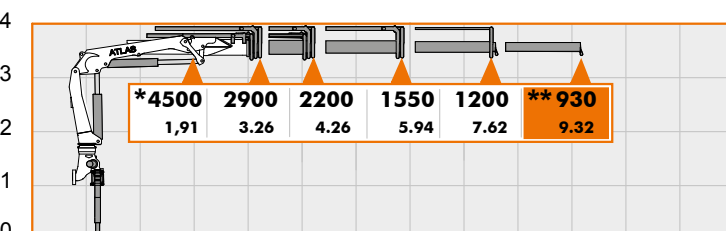


A1SL

**Kg** - Traglast/lifting capacity/En soulevant la capacité / Levantando capacidad in"Kg"  
**m** - Mass/measurement/des mesure/de medición in"m"



A2SL

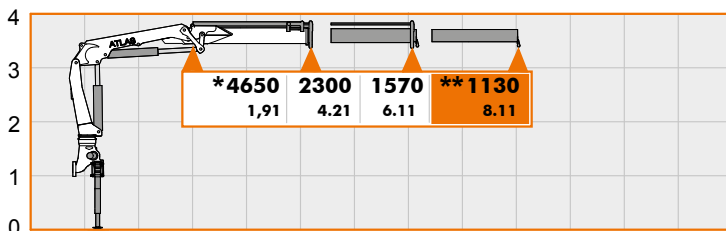


A3SL

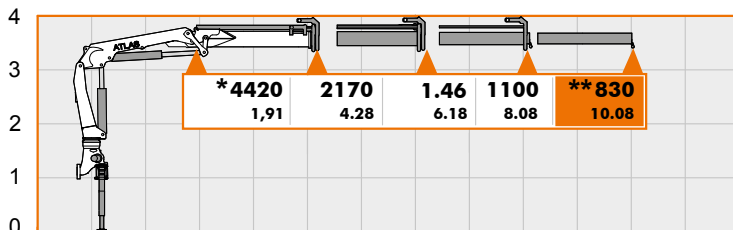
# LASTDIAGRAMM

Load Diagram-Courbes de charges-Curvas de cargas - Diagramma di portata

## AK 96.3

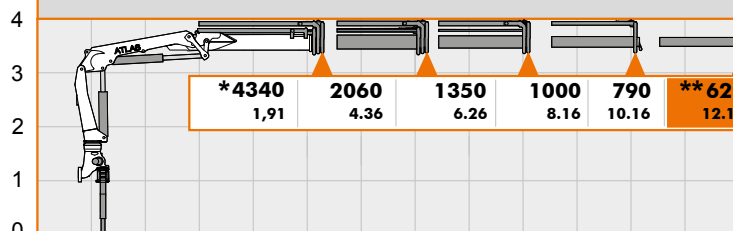


A1L



A2L

Hubarmstellung 10°/ boom position 10°/ Faites tonner la position à 10°/ Lance posición 10°



A3L

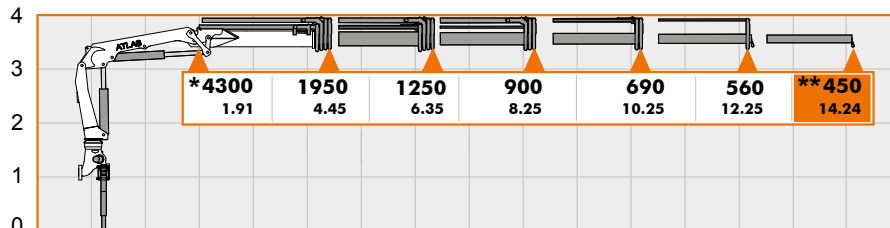
\*\* - Optional

manuelle Verlängerung  
manuell extension  
l'extension mécanique  
extensiones manuales

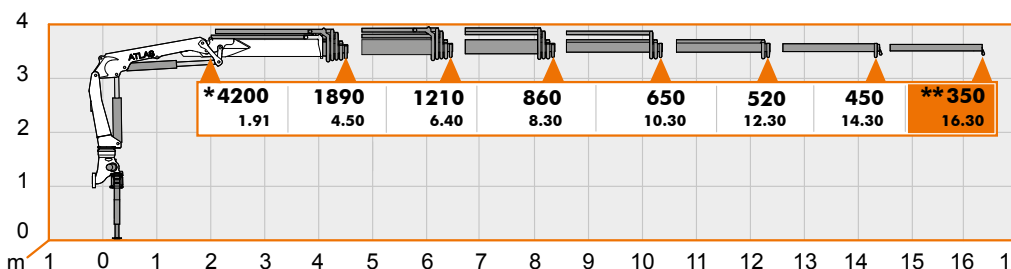
\*

zusätzlicher Lasthakenpunkt am Knickarm  
additional load hook point at jib  
supplémentaires point crochet à flèche  
carga adicional punto de gancho en la horca

Kg - Traglast/lifting capacity/En soulevant la capacité /Levantando capacidad in"Kg"  
m - Mass/measurement/des mesure/de medición in"m"



A4L

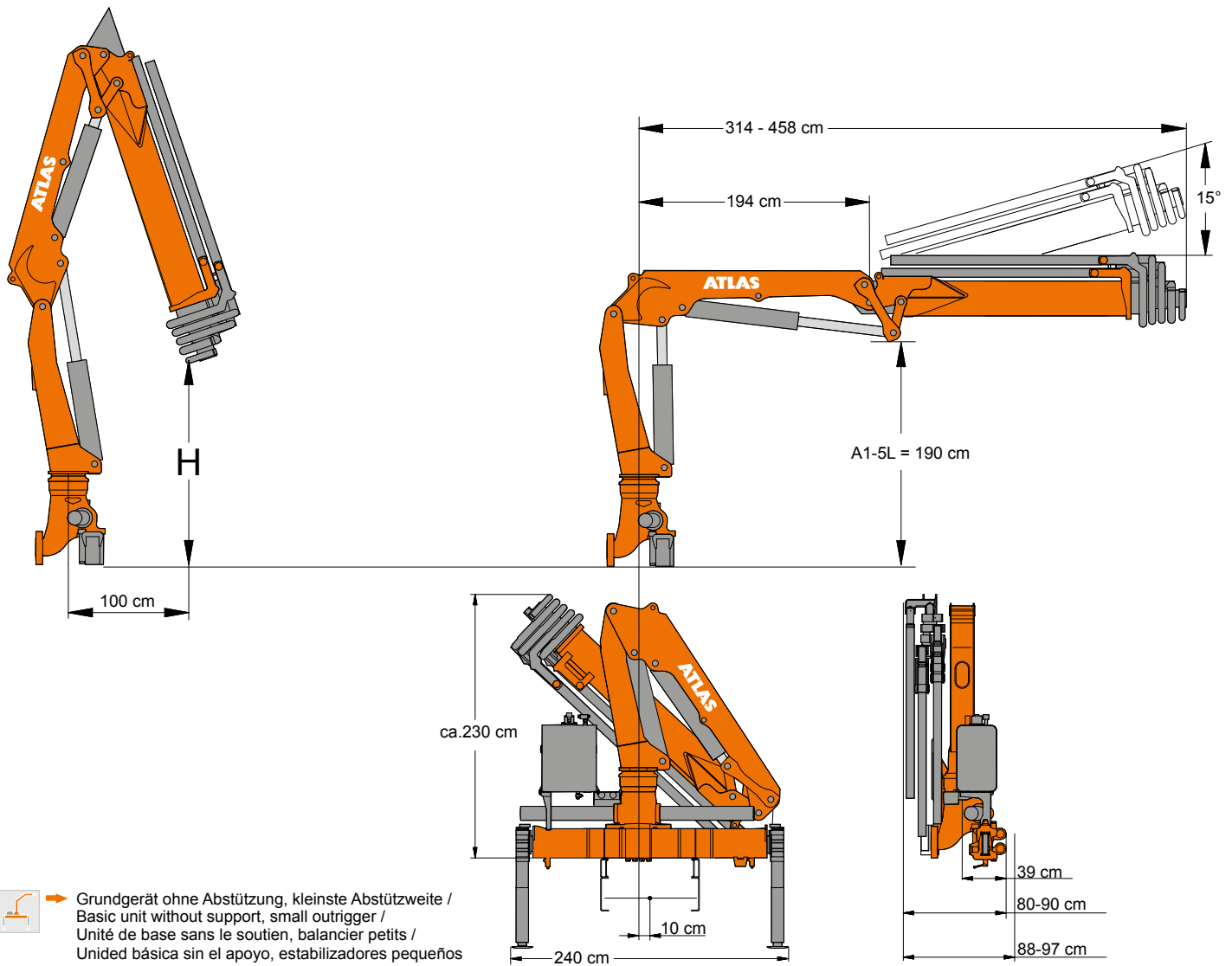


A5L

# ABMESSUNGEN

Dimensions - Dimensions - Dimensiones

## LADEKRAN AK 96.3



AK 96.3		H1/B3					
Typ	Gewicht Weight poids Peso	H	Betriebsdruck operating pressure pression de service Presión de servicio	Ölfördermenge oil supply amount débit d'huile Caudal de aceite	Schwenkbereich swivel range plage de pivotement Alcance de giro	Schwenkmoment swivel moment couple de pivotement Par de giro momento	Hubmoment moment of levage Momento de elevación Momento di sollevamento
Typ	Kg	m	bar	l/min		kNm	mt
A 1	1220	2,66					9,79
A 2	1315	2,56					9,57
A 3	1401	2,47					9,30
A 1SL	1153	3,27					9,86
A 2SL	1251	3,18					9,66
A 3SL	1340	3,08	300	35	410°	27,4	9,89
A 1L	1256	2,05					9,45
A 2L	1375	1,97					9,28
A 3L	1493	1,89					8,98
A 4L	1593	1,81					8,68
A 5L	1678	1,69					8,50

# WIRTSCHAFTLICH, FLEXIBEL, STARK

Economical, flexible, strong - économique, flexible, forte - economica, flexible, fuerte

## AUSSTATTUNG

Facilities - Equipements - Instalaciones



Seilwinde  
Cable winch  
Treuil à Câble  
Cabrestante



Hubarbeitskorb  
Man Basket  
Panier de Travail  
Hombre cesta



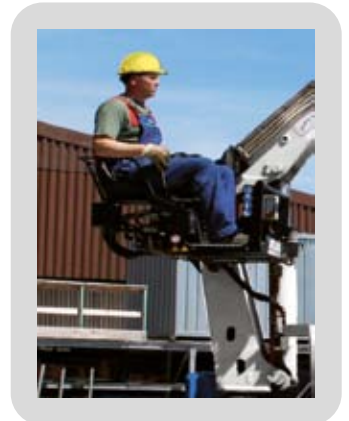
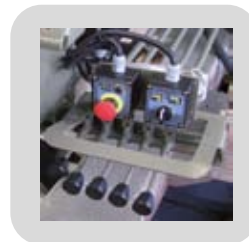
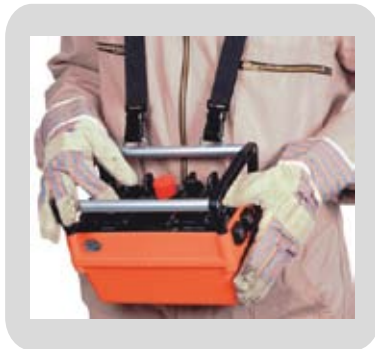
Z-Arm  
Jib-Boom  
Braz Z  
Brazo en Z

Zusatzabstützträger  
Additional outriggers  
D'autres stabilisateurs  
Adicional estabilizadores



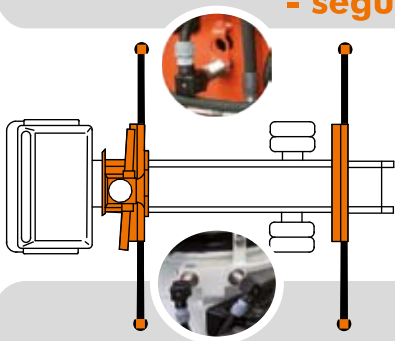
## STEUERUNG

Control - Contrôle - Control



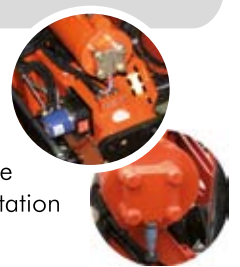
## ABSTÜTZÜBERWACHUNG

Monitoring of the stabilizing support - suivi de l'appui de stabilisation  
- seguimiento del apoyo estabilización



(EAW) nach EN 12999

elektr. Überwachung der Abstützweite und des Schwenkwinkels  
electr. monitoring of the stabilizing support wide and the slewing range  
contrôle électrique de l'écartement de stabilisatin et de l'angle de rotation  
control electrico de los estabilizadores y del angulo de rotación



## WERKZEUGE

Tools - Outils - Herramientas



Steinstapelzange  
Brick Stack Grapples  
Pincas á Parpaings  
Pinza



Greifer  
Grabber  
Grappin  
el garfio



Krangabel  
Pallet Fork  
Fourches  
Paleta Tenedor



# ATLAS



**sicher**

save, sécurité, seguro

**flexibel**

flexible, flexible, flexible

**innovativ**

innovativ, innovante, innovadora

**effizient**

efficient, efficace, eficiente

**kraftvoll**

powerful, puissant, poderoso

**Atlas Maschinen GmbH**

**erreichbar**

available, joignable, alcanzado



Stedinger Straße 324  
D-27751 Delmenhorst  
Tel. +49 (0) 4221-491 - 0  
Fax +49 (0) 4221-491-443  
info@atlasgmbh.com

**[www.atlasgmbh.com](http://www.atlasgmbh.com)**

YOUR CONTACT INFORMATION