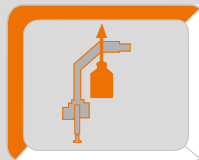


ATLAS

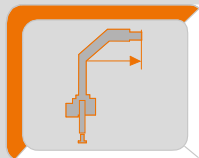
Krane / Cranes / Grues / Grúas



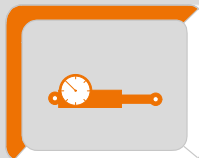
Ladekran AK 126.3E



max : 5780 Kg



max : 16,38 m



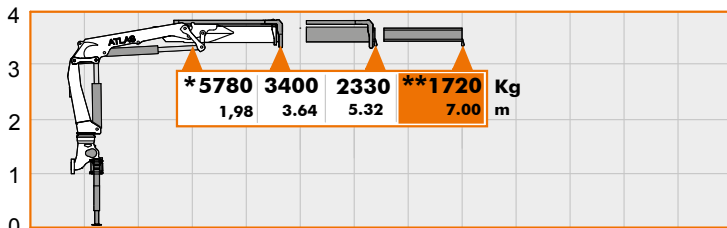
max : 320 bar

AVAILABLE & COST EFFECTIVE

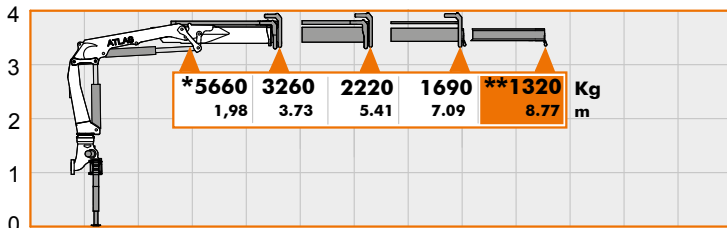
LASTDIAGRAMME

Load Diagrams - Diagramme de charges - El diagrama de cargas

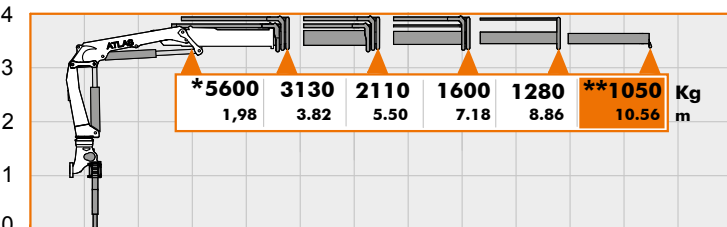
AK 126.3E



A1



A2



A3

Hubarmstellung 10° / boom position 10° / Faites tonner la position à 10° / Lance posición 10°

****** - Optional { Manuelle Verlängerung
Manuell extension
L'extension mécanique
Extensiones manuales

***** - { Zusätzlicher Lasthakenpunkt am Knickarm
Additional load hook point at jib
Supplémentaires point crochet à flèche
Carga adicional punto de gancho en la horca

A1SL

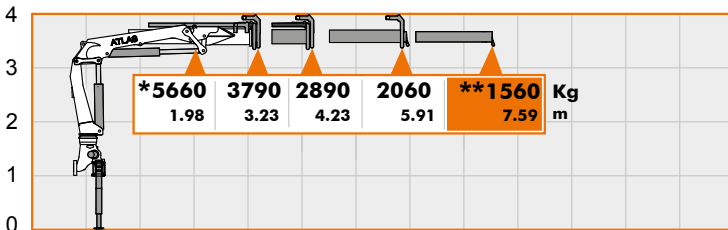
Kg - Traglast/Lifting capacity/En soulevant la capacité /Levantando capacidad in "Kg"
m - Mass/Measurement/Des mesure/De medición in "m"

LASTDIAGRAMME

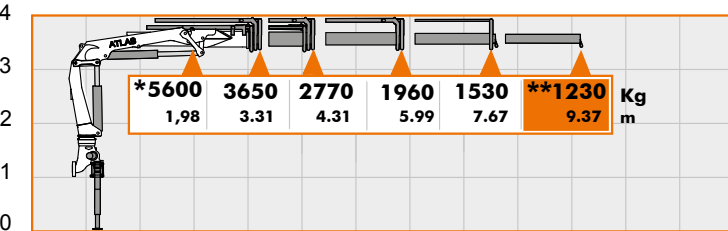
Load Diagrams - Diagramme de charges - El diagrama de cargas

AK 126.3E

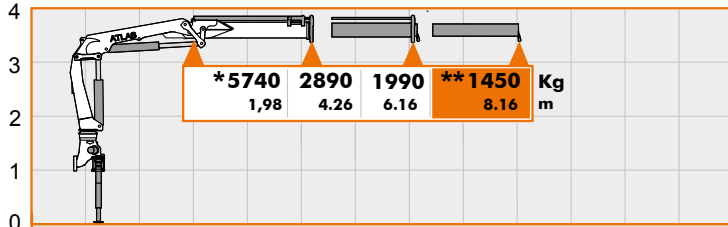
A2SL



A3SL

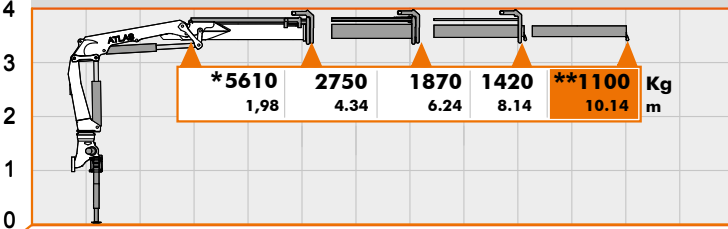


A1L



Hubarmstellung 10°/ boom position 10°/ Faites tonner la position à 10°/ Lance posición 10°

A2L



****** - Optional { Manuelle Verlängerung
Manuell extension
L'extension mécanique
Extensiones manuales

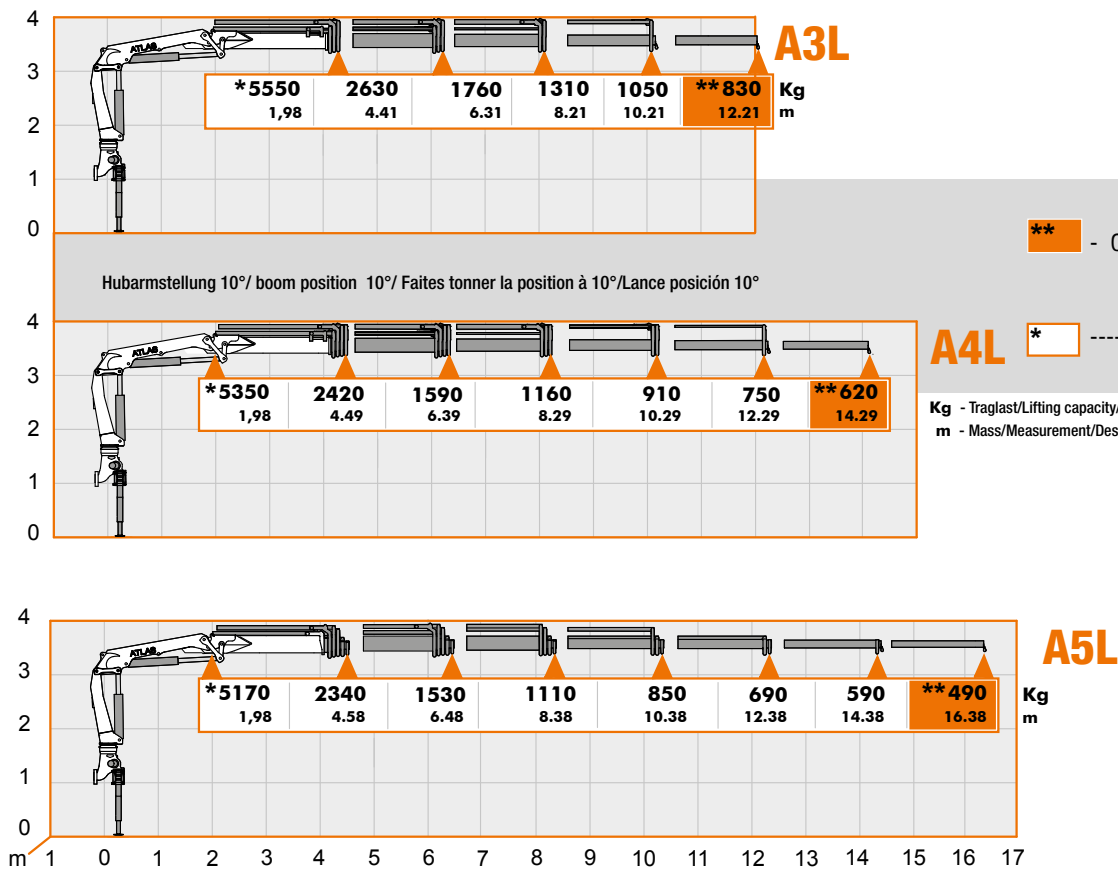
***** - Additional load hook point at jib { Zusätzlicher Lasthakenpunkt am Knickarm
Additional load hook point at jib
Supplémentaires point crochet à flèche
Carga adicional punto de gancho en la horca

Kg - Traglast/Lifting capacity/En soulevant la capacité /Levantando capacidad in "Kg"
m - Mass/Measurement/Des mesure/De medición in "m"

LASTDIAGRAMME

Load Diagrams - Diagramme de charges - El diagrama de cargas

AK 126.3E

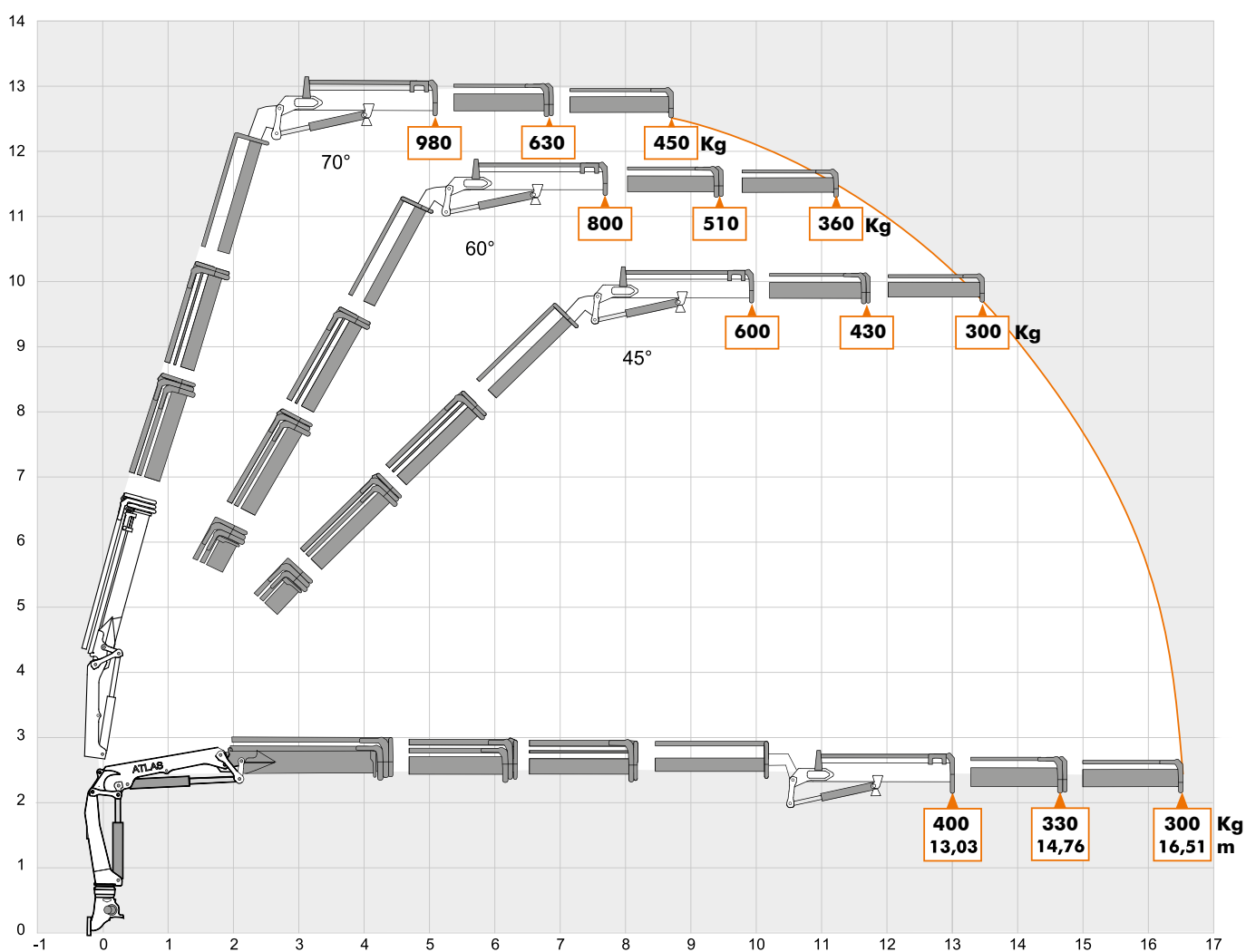


LASTDIAGRAMME

Load Diagrams - Diagramme de charges - El diagrama de cargas

AK 126.3E

A3/Z2

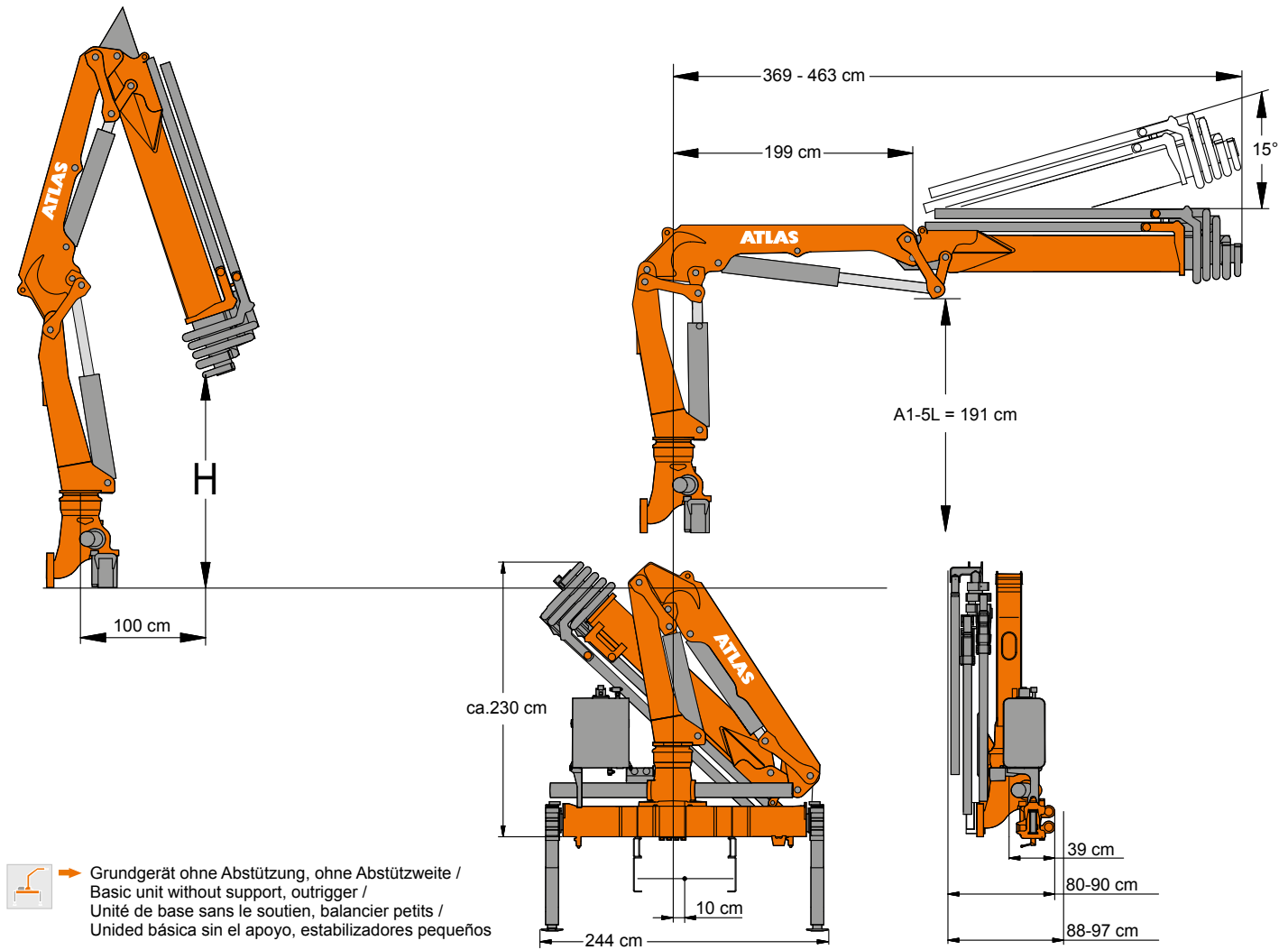



Kg - Traglast/Lifting capacity/En soulevant la capacité /Levantando capacidad in "Kg"
m - Mass/Measurement/Des mesure/De medición in "m"

ABMESSUNGEN

Dimensions - Dimensions - Dimensiones

LADEKRAN AK 126.3E



 Grundgerät ohne Abstützung, ohne Abstützweite /
 Basic unit without support, outrigger /
 Unité de base sans le soutien, balancier petits /
 Unidéd básica sin el apoyo, estabilizadores pequeños

AK 126.3E

H1/B3

	Gewicht Weight Poids Peso	H	Betriebsdruck Operating pressure Pression de service Presión de servicio	Ölfördermenge Oil supply amount Débit d'huile Caudal de aceite	Schwenkbereich Swivel range Plage de pivotement Alcance de giro	Schwenkmoment Swivel moment Couple de pivotement Par de giro momento	Hubmoment Moment de levage Momento de elevación Momento di sollevamento
Typ	Kg	m	bar	l/min		kNm	mt
A 1	1371	3,84					12,38
A 2	1518	3,56					12,20
A 3	1611	3,35					12,00
A 1SL	1290	4,08					12,40
A 2SL	1437	4,10					12,20
A 3SL	1530	4,11	320	45	410°	27,4	12,00
A 1L	1393	2,65					12,30
A 2L	1546	2,54					11,90
A 3L	1681	2,44					11,60
A 4L	1796	2,34					10,90
A 5L	1921	2,19					10,70
A 3/Z2	2081	-					-

WIRTSCHAFTLICH, FLEXIBEL, STARK

Economical, flexible, strong - économique, flexible, forte - economica, flexible, fuerte



Seilwinde
Cable winch
Treuil á Cábale
Cabrestante

AUSSTATTUNG Facilities - Equipements - Instalaciones



Hubarbeitskorb
Man Basket
Panier de Travail
Hombre cesta



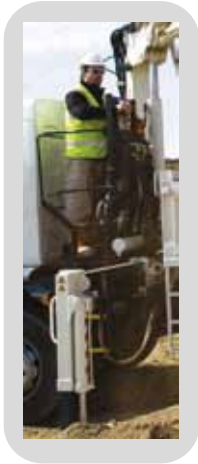
Z-Arm
Jib-Boom
Braz Z
Brazo en Z

Zusatzabstützträger
Additional outriggers
D`autres stabilisateurs
Adicional estabilizadores



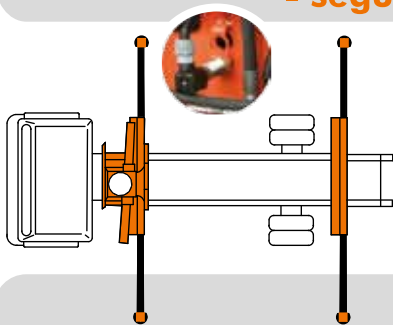
STEUERUNG

Control - Contrôle - Control



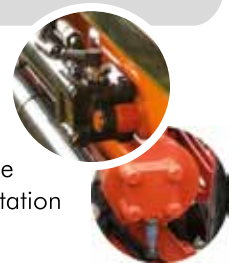
ABSTÜTZÜBERWACHUNG

Monitoring of the stabilizing support - suivi de l'appui de stabilisation
- seguimiento del apoyo estabilización



(EAW) nach EN 12999

elektr. Überwachung der Abstützweite und des Schwenkwinkels
electr. monitoring of the stabilizing support wide and the slewing range
contrôle électrique de l'écartement de stabilisatin et de l'angle de rotation
control electrico de los estabilizadores y del angulo de rotación



WERKZEUGE

Tools - Outils - Herramientas



Steinstapelzange
Brick Stack Grapples
Pincas á Parpaings
Pinza



Greifer
Grabber
Grappin
el garfio



Krangabel
Pallet Fork
Fourches
Paleta Tenedor



ATLAS



sicher

safe, sécurité, seguro

flexibel

flexible, flexible, flexible

innovativ

innovativ, innovante, innovadora

effizient

efficient, efficace, eficiente

kraftvoll

powerful, puissant, poderoso

Atlas Maschinen GmbH

erreichbar

available, joignable, alcanzado



Stedinger Straße 324
D-27751 Delmenhorst
Tel. +49 (0) 4221-491 - 0
Fax +49 (0) 4221-491-443
info@atlasgmbh.com

www.atlasgmbh.com

YOUR CONTACT INFORMATION